



Rawlings News



Rebecca Moore, Principal
Jeane Morehouse, Assistant Principal
Patricia Wright, Area Superintendent
Michelle Myers, PTA President
Mike Waddell, SAC Chairperson

**December 2020/
January 2021**

6505 68th St. N.
Pinellas Park, FL 33781

727-547-7828

Principal's Point

2020-2021 School Hours: Monday-Friday, 8:45-2:55

Dear Rawlings Families,

Happy December!

I have been spending most of the school day in classrooms observing your child or children being active learners. I am proud of all of the hard work and accomplishments that I see and hear as I have conversations with them about their learning. I am also proud of the outstanding instruction that our teachers and staff are providing to our scholars each day. I am pleased to announce that Mr. Tran is one of the top five semifinalists for Support Employee of the Year! Please join me in congratulating Mr. Tran on this well-deserved honor! During the month of December, your child/children will be taking the next round of MAP assessments. This assessment is extremely important as it has a direct correlation of how your child will perform on the FSA (Florida Standards Assessment). All students in grades 3-5 take the FSA assessment in the Spring. Make sure to talk with your child about the importance of focusing and doing their best!!! Our school will be closed December 21st through January 1st for the Winter Break. School will resume for all students on Monday, January 4th. Make sure to check the "Upcoming Events" section of this newsletter for our January events. We will be sending home an optional calendar of activities to extend learning over the Holiday Break. I am hopeful that our scholars will find some time to accomplish these tasks. I wish you all a very Happy Holiday Season and a safe and healthy New Year!



Rebecca Moore, Principal



Curriculum Corner by Jeane Morehouse, Assistant Principal

If cold weather or rain keeps your children inside over the **Winter Break** please have your child(ren) read. How you assist your child in selecting the right level book for them? Its kind a a *Goldilocks and the Three Bears* approach to find their **just right book**.

How to Find Your Child's Just Right Book

Parents often feel in the dark about helping your child select a book to read from home, the library, or the book store. As your child moves through the school year and gets older their reading level changes. This amazing reading growth their child has is fantastic but how do you help them find a **just right** book? There is an easy way to help your child choose a **just right**...

1. First have your child select a book that interests them.
2. Next, have them open up to a random, complete page.

Then have your child read the page.

-If they make no errors or have no struggle then the book is **too easy** for them.

-If they struggle a lot with many words and it is clearly difficult then the book is **too hard**.

-If your child has about three challenges they can read through then there is a good chance you have just found your child's **just right** book.

Happy Reading!!!!

Mission Statement

"Educate and prepare each student for college, career and life."

Vision

"Always expect the best - 100% student success."

REMINDER



The Pinellas County Schools Mask Mandate is still in effect to help mitigate the spread of COVID-19.

All students are required to wear masks throughout the day, covering their nose and mouth, except during actively eating and mask breaks.

All parents/ visitors, especially during arrival and dismissal, are required to wear a mask - covering their nose and mouth - while on campus.

Thank you for your help.
We are all in this together.

Virtual Family Science Night

In January 2021 we will have our first Virtual Family Science Night. The date at this time is TBA, but as soon as it is determined we will post it on our school website, share the flyer on class Dojo, and Ms. Moore will remind everyone on morning announcements and in her weekly phone call message. So be prepared to engage in some fun, virtual, interactive, science fun.



Positive relationships within families can be enhanced by building strong relationships between adults and children in family settings.

Click on the below links to acquire resources and tips on building positive relationships within your family

[Center on the Social and Emotional Foundations for Early Learning](#) - Website containing resources on building positive relationships for parents, includes user-friendly modules.

[CSEFEL Building Positive Relationships](#) - Link to a downloadable hand-out that includes tips for building positive relationships for families.

T
i
t
l
e
1

P
B
I
S

Nursing Notes by School Nurse Kimberly Joly



Hello Rawlings Parents/Guardians:

Thank you so much for your diligence in helping to keep everyone healthy and safe while on campus. Parents have been proactive in keeping sick students at home and have sought medical care when appropriate. This has greatly contributed to the very low Covid-19 case count here at Rawlings.

As we enter the cold and flu season, it is important to continue monitoring your child at home as explained in the bright yellow "Wellness Responsibilities and Expectations" form that was sent home in the First Day Packet with your student. If your child is experiencing any of the listed symptoms, please keep your child at home until symptoms improve. Your student can return to school when you are able to affirm your student is well enough to attend school.

Just a reminder, if your child presents with a fever $\geq 100.4^{\circ}\text{F}$ via no-contact thermometer, cough (new or worsening), shortness of breath or difficulty breathing, vomiting (one episode), or diarrhea (one episode) while at school, you will be notified, and your student will need to be picked up as soon as possible. If your child presents with any TWO or MORE of the following, they will also be sent home: chills, fatigue, muscle/body aches, headache, new decrease in taste or smell, sore throat, new congestion or runny nose, or nausea.

If your child is tested for Covid-19, please present a copy of the negative test results to the front office directly. Your student is able to return to school with these negative results as long as they are symptom free. If the test results in positive, you will receive guidance on the next steps from the Pinellas County Schools Covid Team.

If you have any questions or concerns about this process or any other health related issue concerning your child, please do not hesitate to call me at 727-547-7828 ext 2026 or email me at jolyk@pcsb.org.

Thank you again for all you are doing to ensure the school year remains healthy and safe for everyone.



Rawlings Strong,

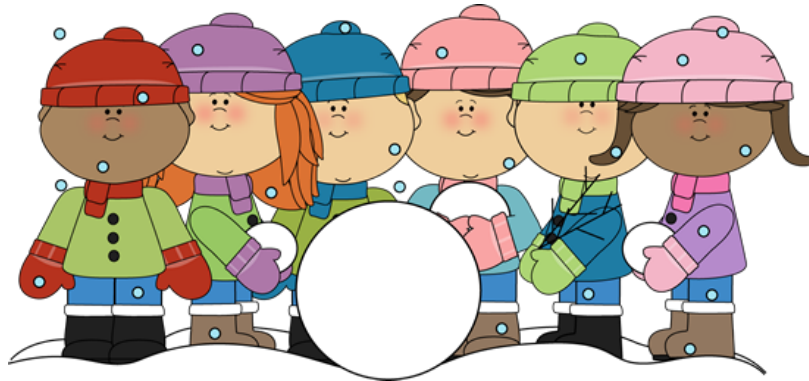
Kimberly Joly, LPN
School Health Services
Rawlings Elementary



Winter Spirit Week!



During the week of December 14th-18th, Rawlings students and staff will have the opportunity to participate in our Winter Spirit Week! Be on the lookout for more information on that week's theme days.



Rawlings Family Lunch Munch

We do not have any Family Lunch Munch events scheduled at this time. Please check back for updates later in the year.



School Advisory Council (SAC)

SAC is a team representing various segments of the community, which meets to discuss our school's academic plan and progress and helps create the School Improvement Plan (goals and objectives for the school). There will be no SAC Meeting in December. **The next SAC meeting will be a virtual meeting on Monday, January 11, 2021 at 3:15 pm. If you would like to participate, please email Lori-Ann to get the link: dipental@pcsb.org**



Virtual Volunteers and Mentors needed!!

New: Volunteer registration is now **online** at www.pcsb.org/volunteerregistration . Please fill out application online and then contact Lori-Ann at dipental@pcsb.org after completing.

Following our Summer Break all PCS Volunteer profiles were placed as: **INACTIVE**. All returning volunteers must re-activate in the Volunteer System prior to volunteering. Please re-activate your volunteer account.

To sign into the Volunteer System, please use the **Google Chrome browser** and go to: <https://focus.pcsb.org/volunteer>

Enter your username and password: User ID: **V. Last name, first initial Example: Charkm** Password: Your **Last name** (Capitalize the first letter only) followed by the 4-digit **Birth YEAR Example: Chark1990**

At this time volunteers and mentors are not allowed on school campus following district guidelines for Covid 19. This will be reevaluated at a later date. All volunteering and mentoring will be virtual until notified otherwise.

A big THANK YOU for our
Great American Teach-In Virtual Volunteers !!

November 18th could not have been such a huge success without the many community members and parents that shared their professions, expertise and talents virtually with our students. Even though the students could not experience Great American Teach in person it was still enjoyed by all. A huge thank you to Rawlings parents and staff who helped give contacts for some of our presenters as well. We look forward to another successful event in November 2021

It is not too early to think about next year! If interested please contact Lori-Ann at 727-547-7828. Thank you to all those involved!



DoubleTree Beach Resort

Keep Pinellas Beautiful

Marie Molina

Devon Francke

Joe Rosenberger

Stephanie Ellington

Patricia Deplasco

Kimberly Rogers

Gary Kinney

Tim Sasser

St Joseph's Children's Hospital

Pinellas Park Fire Department

Florida Aquarium

Tim Syllaba

Sunstar Ambulance

Clearwater Marine Aquarium

Dali Museum

MOSI

Barbara Ponce Library





Did you know that some people in Mexico and Latin America celebrate Christmas for nine days? People gather together to hold *posadas* (a re-enactment of holiday events), sing carols, and break open star-shaped piñatas filled with treats.

This month, please encourage your children to learn about holidays celebrated all around the world. The following videos can teach you about Christmas, Hanukkah, Kwanzaa, Korean Harvest Moon festival, Diwali, and New Year.

<https://jr.brainpop.com/socialstudies/holidays/winterholidays/>

<https://www.brainpop.com/socialstudies/culture/winterholidays/>

<https://www.sesamestreet.org/videos?vid=25435>



Thank you, Partners and Friends!

Donations

DoubleTree Beach Resort

Keep Pinellas Beautiful

Publix

BJ's Restaurant

Pinellas Park Rotary Members

Pinellas Park Police Department



To become a classroom partner, a donation of \$100 in the form of cash, money order or materials is given to a teacher. For more information, contact Lori-Ann DiPenta at 547-7828

Upcoming Events

December Events

December 14-18—Winter Spirit Week
December 19-January 3—Winter Holidays

January Events

January 11—Virtual SAC Meeting, 3:15
January 18—Martin Luther King Jr. holiday, school closed for staff and students
January 19—No school for students

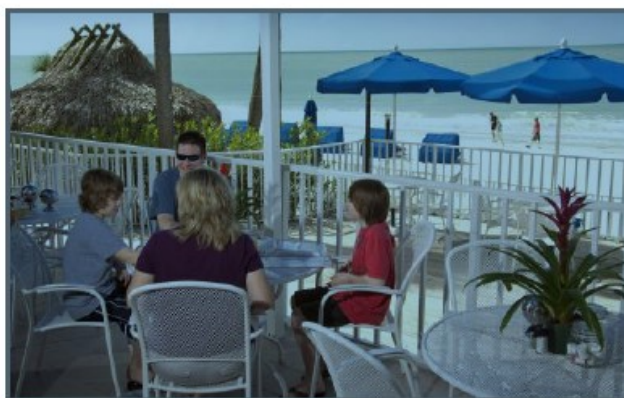


www.pcsb.org/safetyconcern



MANGOS

Restaurant & Tiki Bar



Located at:



DOUBLE TREE RESORT
BY HILTON™

TAMPA BAY - NORTH REDINGTON BEACH

*17120 Gulf Blvd.
N. Redington Beach
(727) 369-7180*

What a View!!

www.MangosRestaurant.com

We also offer Weddings on the Beach, Receptions, Reunions and Retreats!